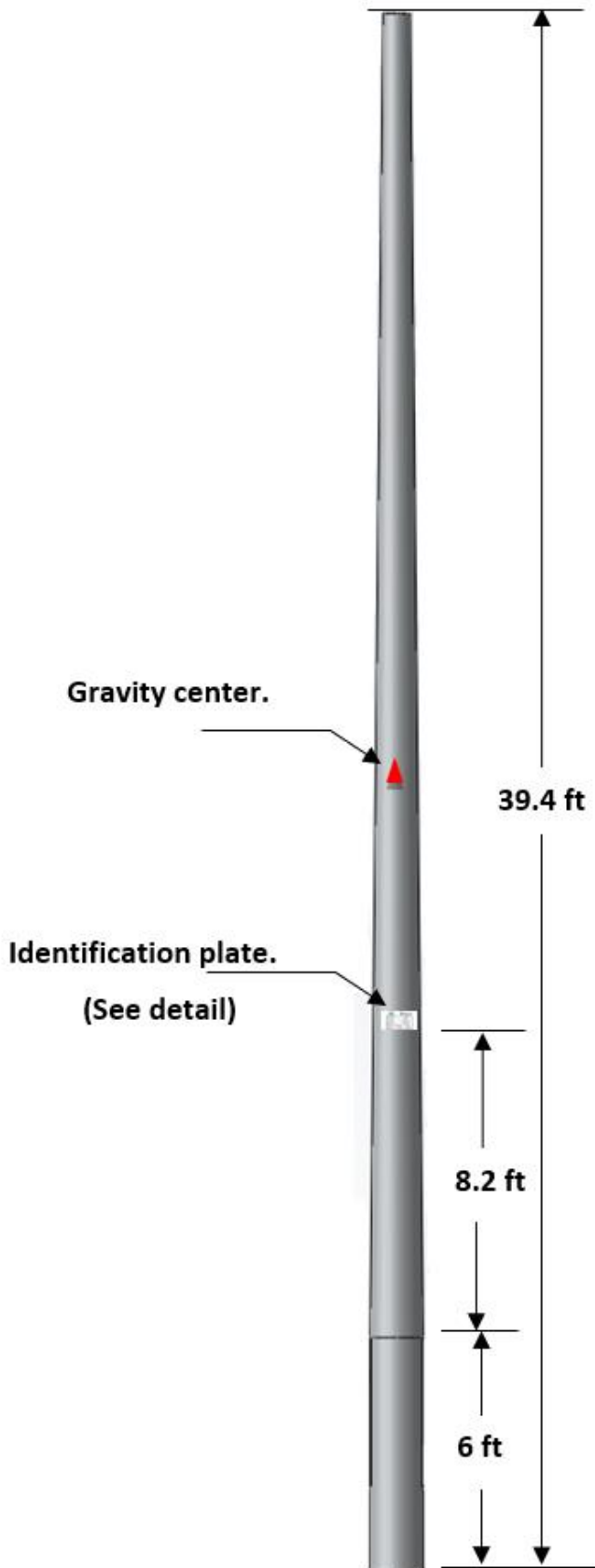



TECHNICAL DATA SHEET

FRP POLE 40 ft. / 2393 lbf / CTC



FEATURES	
Approximate weight (lb)	358.6
Comercial Height (ft)	40
NESC Grade B equivalency	Class 2
Nominal work load (lbf)	957.4
Design load (lbf)	2393.6
Safety Factor	2.5
Pole Height (ft)	39.4
Embedment Height (ft)	6
Base nominal diameter (in)	15.3
Embedment diameter (in)	14.5
Top nominal diameter (in)	5.9
Taper	1.8%
Manufacturing standard	ASTM D 4923-01

FIBERGLASS REINFORCED POLYMER


Multicreto®
Licensed by Fibratore

Pais de Origen:		México	
Nomenclatura:		PCRFV-7M-CTC	
Carga de Diseño:		350 Kgf	
No. De serie:	Muestra	Masa Total:	38 Kg
Tipo de Fibra:	E	Fecha:	2016

4" 2"

IDENTIFICATION PLATES:

1. Marking embedded in the laminate
2. Translucent finish
3. Not removable

NOTES:

1. Gray finish with UV protection and self-extinguishing agent
2. Perforations according to customer's requirement.
3. Smooth exterior finish.

