



TECHNICAL DATA SHEET

PYRAMIDAL HANDHOLE

MANUFACTURED IN:

Fiberglass Reinforced Polyester (FRP) and polymer concrete

INCLUDES POLYMER CONCRETE COVERS
f' c= 7110 psi

Average cover weight – 83 lb ea.
Average handhole weight - 55 lb.

DESCRIPTION

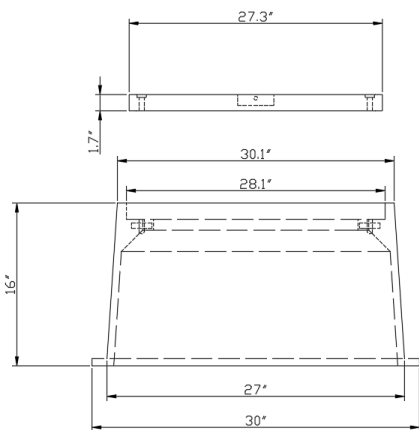
Telecommunications sidewalk handhole without bottom, manufactured in FRP, dimensions 46 in. x 28.2 in. x 15.7 in. with a frame made of the same material and two polymer concrete covers reinforced with fiberglass.

UTILIZATION

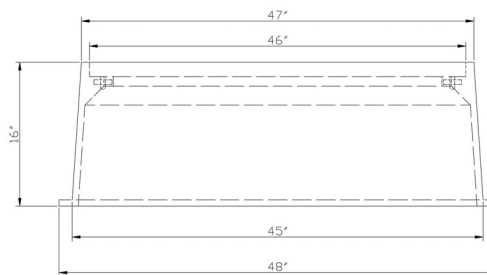
PRIMARILY USED IN TELECOMMUNICATIONS AND FIBER OPTIC NETWORKS.

FIBERGLASS CHARACTERISTICS

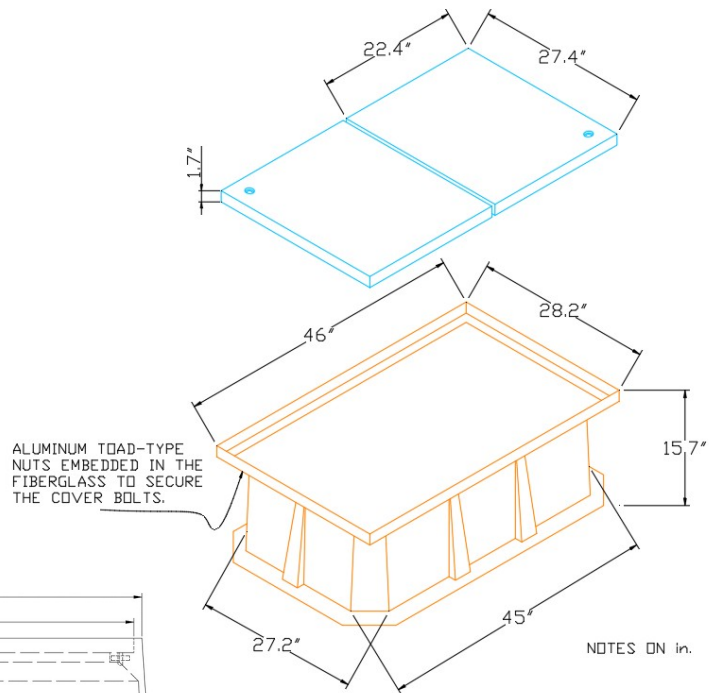
- Good thermal insulation
- Excellent dielectric properties
- Withstands high temperatures
- Chemically inert to acids and low porosity
- UV protection
- Fire retardant



SIDE VIEW



FRONT VIEW



NOTES ON In.

NAME: PYRAMIDAL HANDHOLE		SPECIFICATION OR STANDARD: TELECOM
	SCALE: S/E	EDITION: 2008
	DIMENSIONS: inches	
	APPROX. WEIGHT: 220.5 lb	

